

# AL & ERWIN – by Rajmil Fischman

## New, Public Domain and Open Licence

### FREE DOWNLOAD:

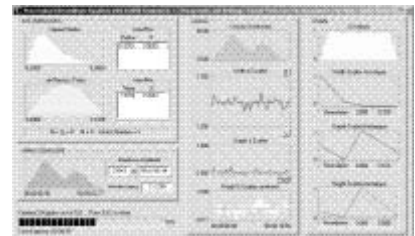
<http://www.keele.ac.uk/depts/mu/staff/rajmilfischmanalsoftware01.htm>

AL ... gorithmic Compositional Environment is a multiple document interface (MDI) application, with frame windows that present views of different documents and/or several views of the same document. It is designed for the creation and manipulation of sonic events and their organization into a structured musical work. Currently, AL is distributed in conjunction with ERWIN, a plug-in that applies the solutions of Schrödinger's equation for an atomic potential with radial symmetry (a well-known equation from Quantum Mechanics) to the creation of granular clouds.

In order to aid user familiarity with the software and a reasonably short learning curve, care was taken to develop an interface within an accepted general standard for windows applications; including a menu bar, a tool bar, common window components and typical mouse drag and drop operations. Also, key shortcuts are implemented for most commands. Another important consideration in the design of AL was the desire to provide a reasonably open system, with the option for development of third party plug-ins; thus avoiding the constraints imposed by a single type of musical process.

Finally, the help pages consist of a detailed manual for AL and ERWIN, including a tutorial and instructions for writing third party plug-ins. Hopefully, future developments by the author and others will implement a variety of compositional approaches in addition to ERWIN.

## SCREENS



**AL and ERWIN is also included with all new CDP Systems and the Release 5 Upgrade.**

## Minimum Requirements

ITEM	REQUIREMENT
<b>Processor</b>	Pentium (Pentium III onwards recommended)
<b>Operating System</b>	Windows 98/ME/XP (AL was initially developed on Windows 2000 but the latest version has not been tested in this environment)
<b>Screen Resolution</b>	Although AL can run on lower resolutions, a minimum of 1024x 768 pixels or higher is recommended. The software will run on a smaller resolution but some graphics components may not fit in the screen.
<b>Microsoft DirectX 8™</b>	The AL and ERWIN installation disk should install DirectX 8™, if required.
<b>Soundcard</b>	DirectX™ compatible (recommended). NOTE: Rehearse and playback functions are optimised to work with DirectX™. There may be delays and cracks when using soundcards, which are not DirectX™ compatible.